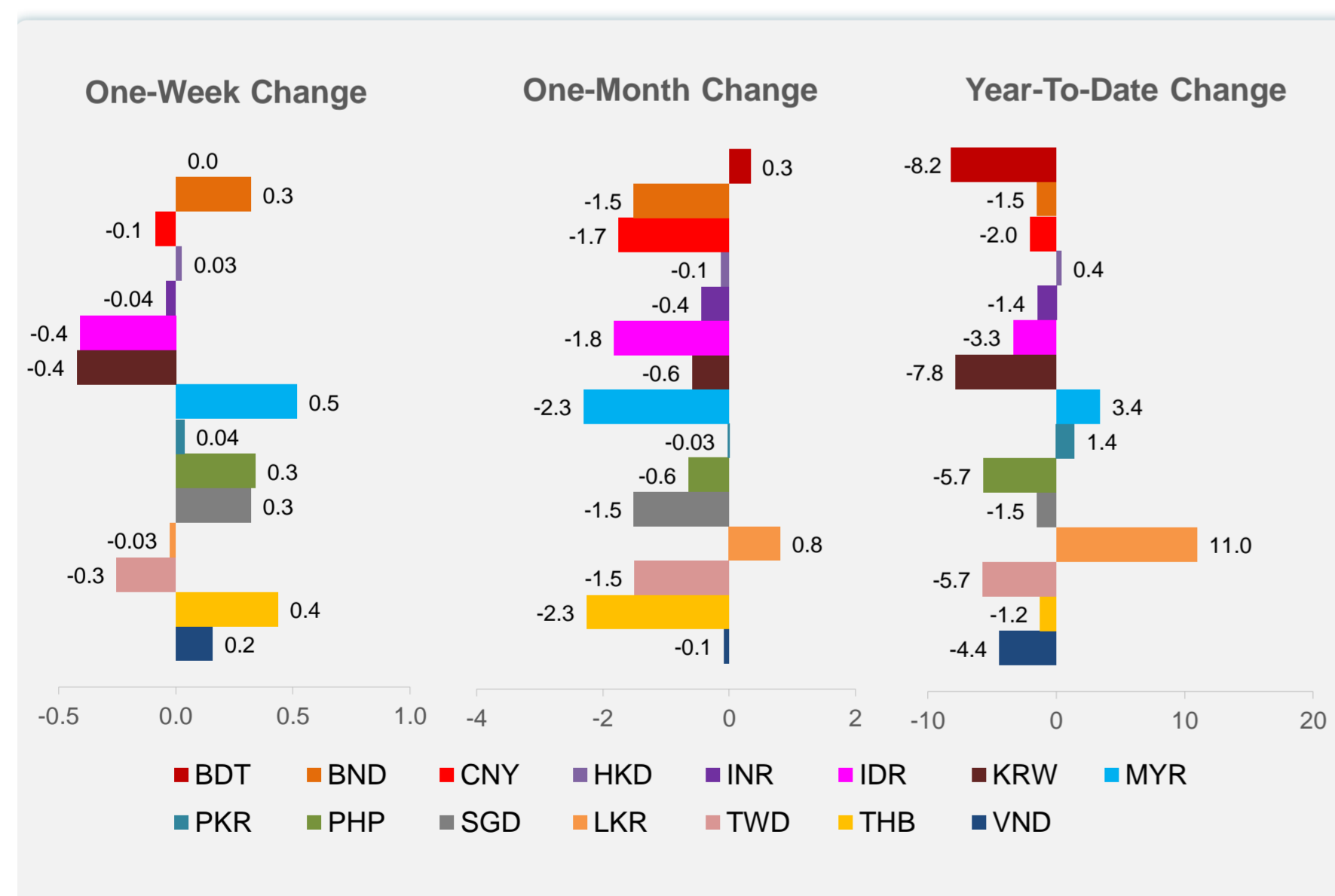
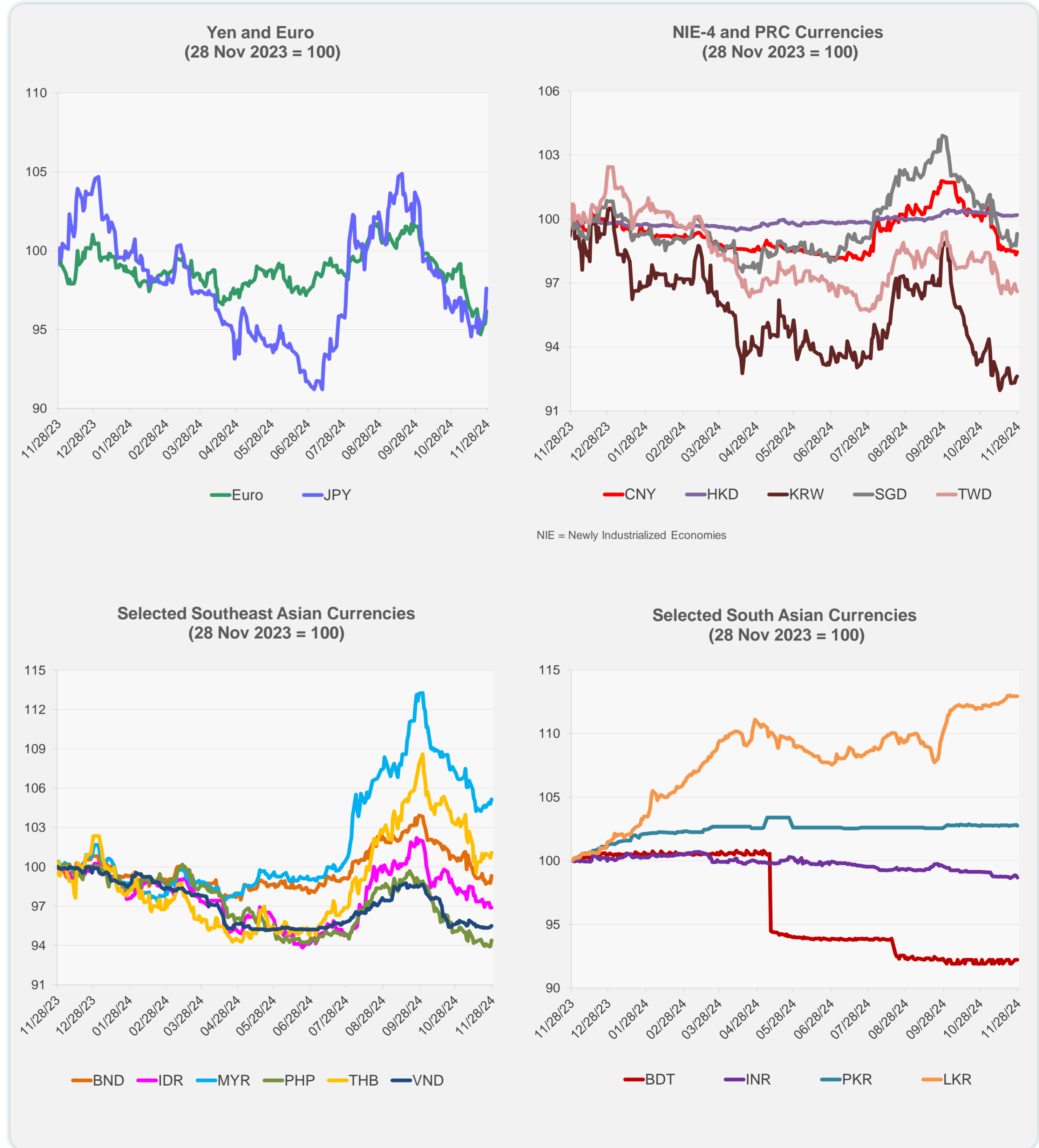
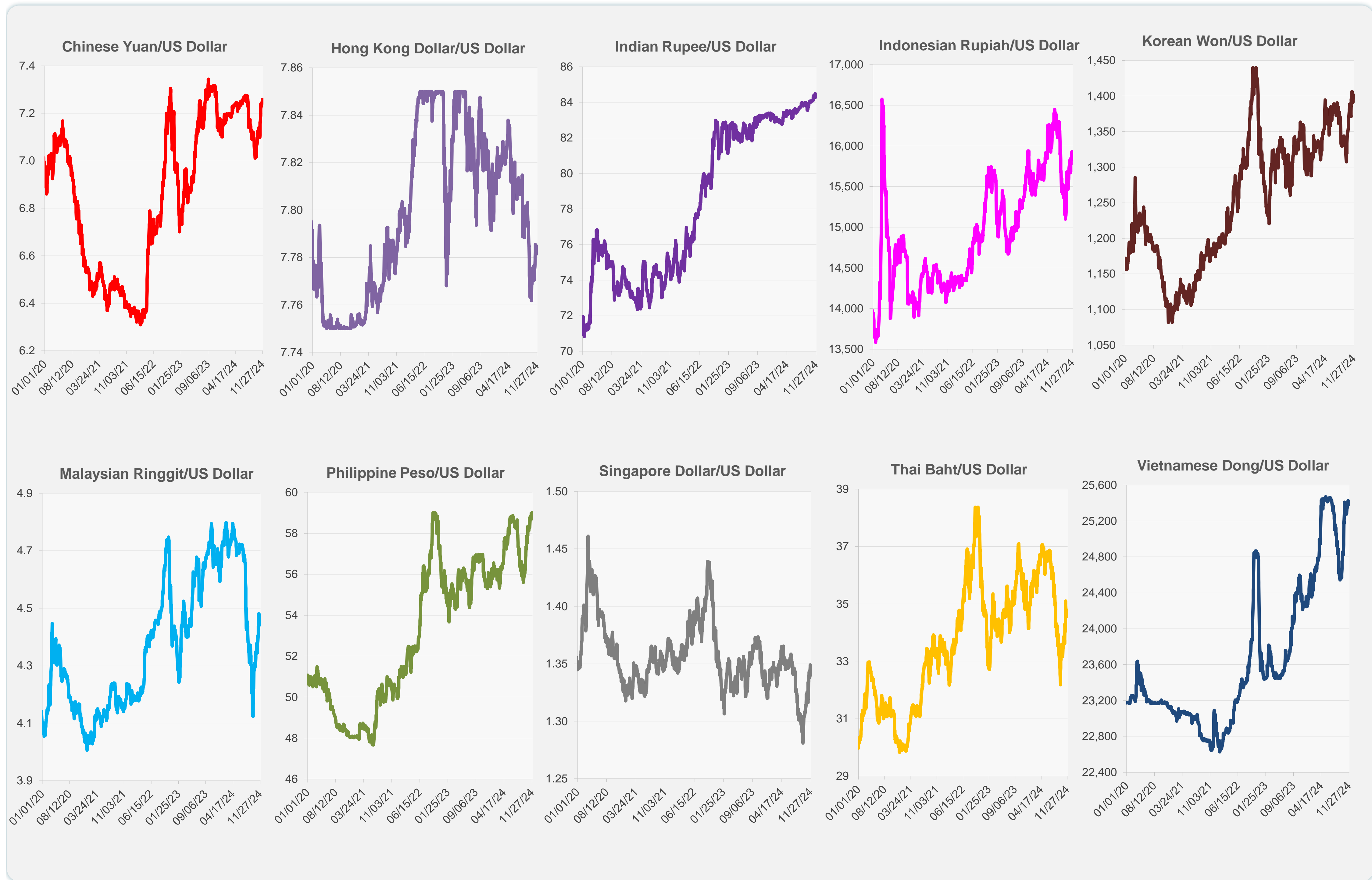


	Latest Closing	% change from Previous Day	% change from 01-Jan-24
Euro	0.95	0.86	-4.28
Japanese yen (JPY)	151.08	1.58	-6.74
Bangladeshi taka (BDT)	119.50	0.00	-8.16
Brunei dollar (BND)	1.34	0.57	-1.50
Chinese yuan (CNY)	7.25	0.13	-2.05
Hong Kong dollar (HKD)	7.78	0.02	0.39
Indian rupee (INR)	84.45	-0.14	-1.44
Indonesian rupiah (IDR)	15,930.00	0.00	-3.35
Korean won (KRW)	1,396.95	0.09	-7.79
Malaysian ringgit (MYR)	4.44	0.34	3.41
Pakistan rupee (PKR)	277.90	-0.06	1.42
Philippine peso (PHP)	58.72	0.49	-5.67
Singapore dollar (SGD)	1.34	0.57	-1.50
Sri Lanka rupee (LKR)	291.03	0.00	10.97
Taipei,China NT dollar (TWD)	32.57	-0.12	-5.70
Thai baht (THB)	34.57	0.37	-1.25
Vietnamese dong (VND)	25,385.00	0.09	-4.40



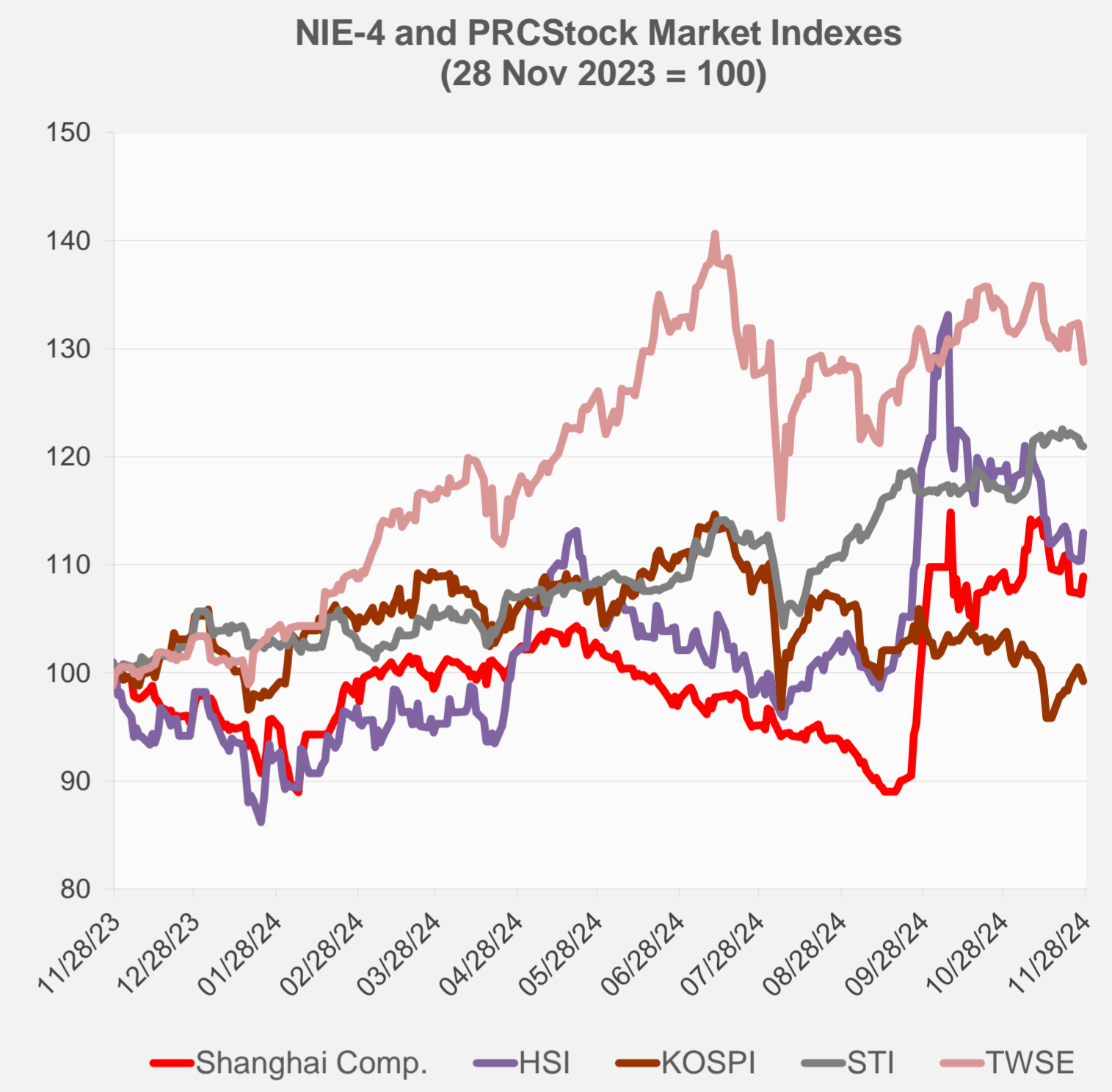
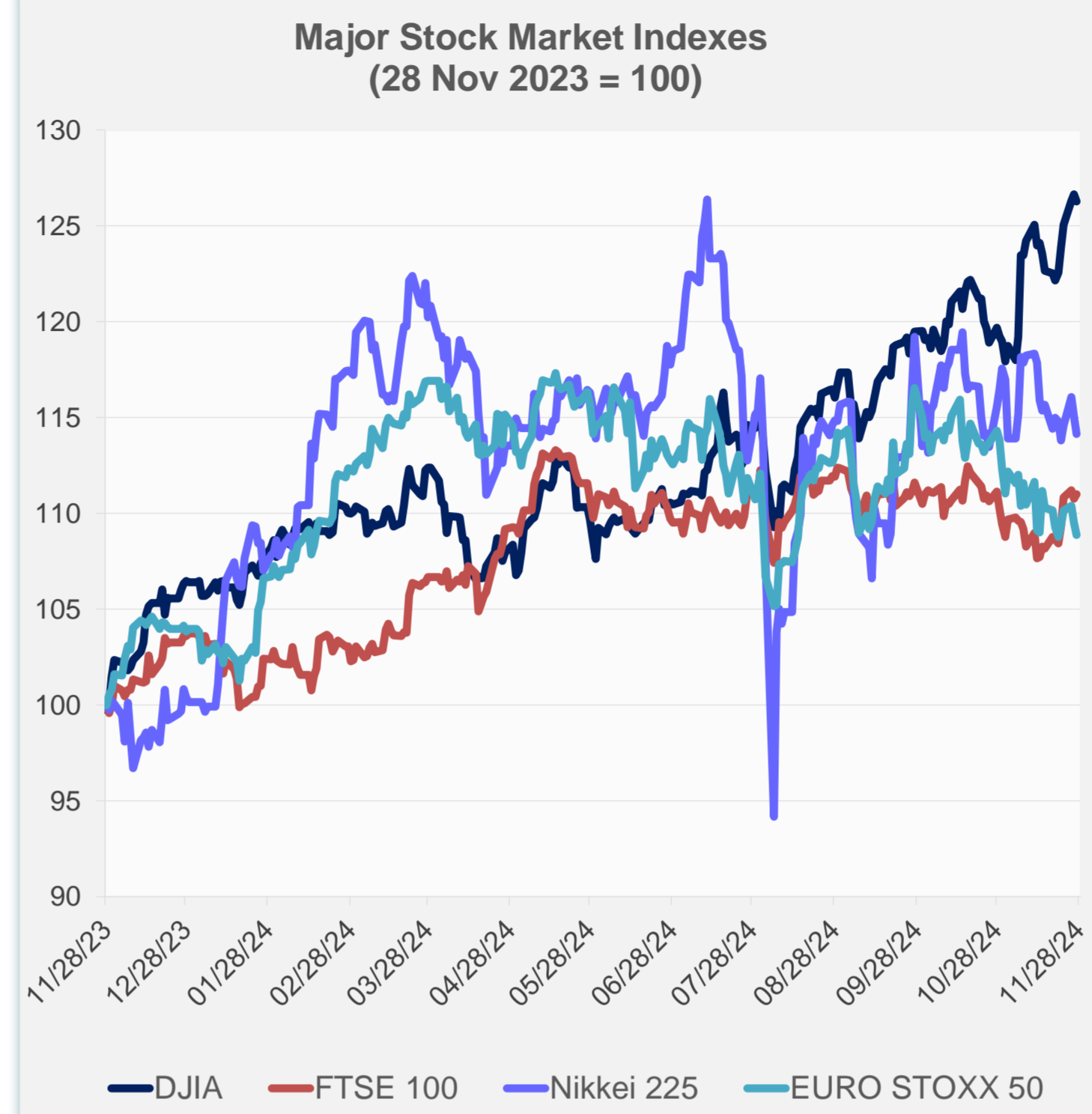
Note: Negative/Decreasing values indicate depreciation of local currency, and positive/increasing values indicate appreciation.
Source: ADB calculations using data from Haver Analytics.



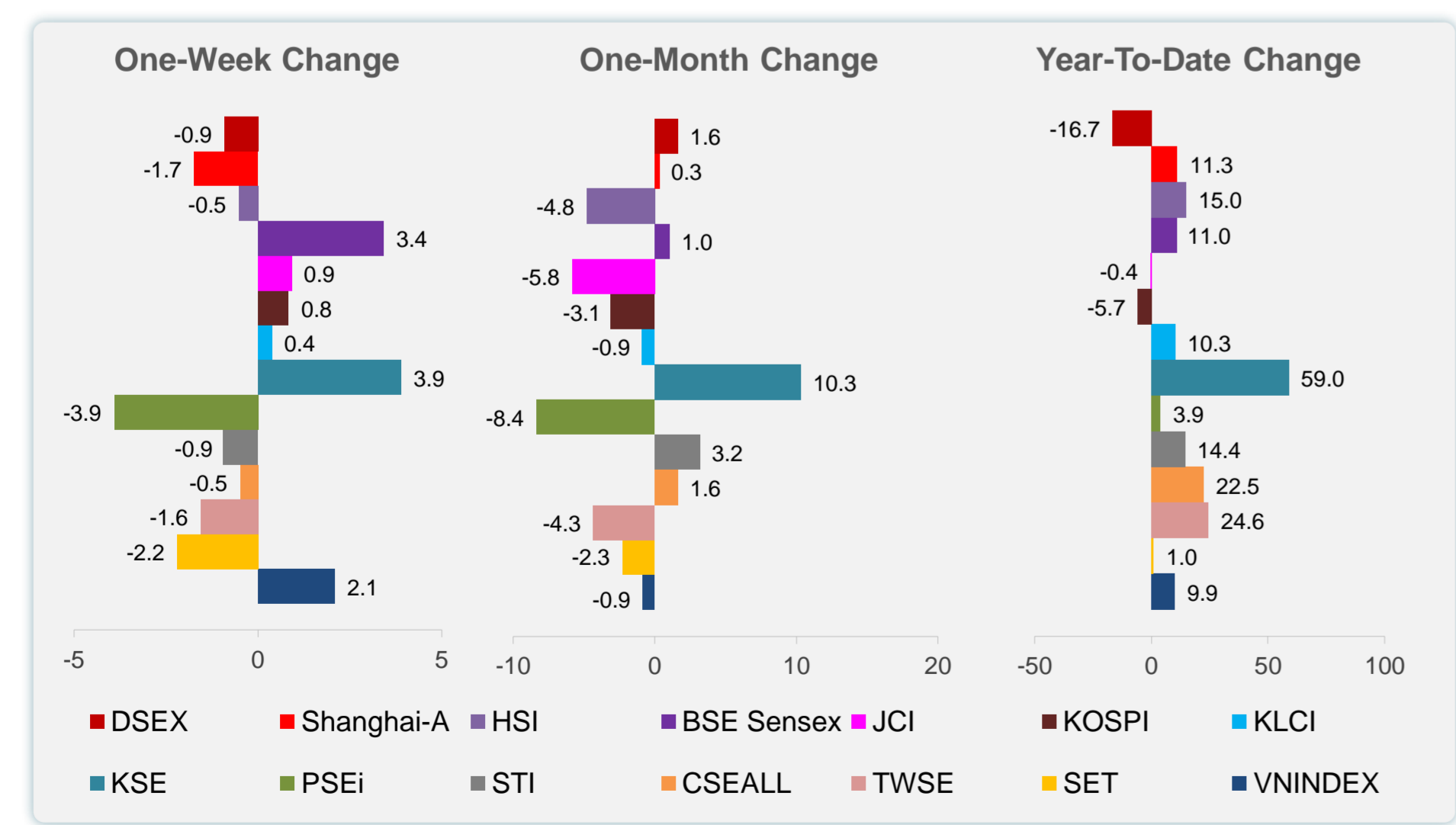
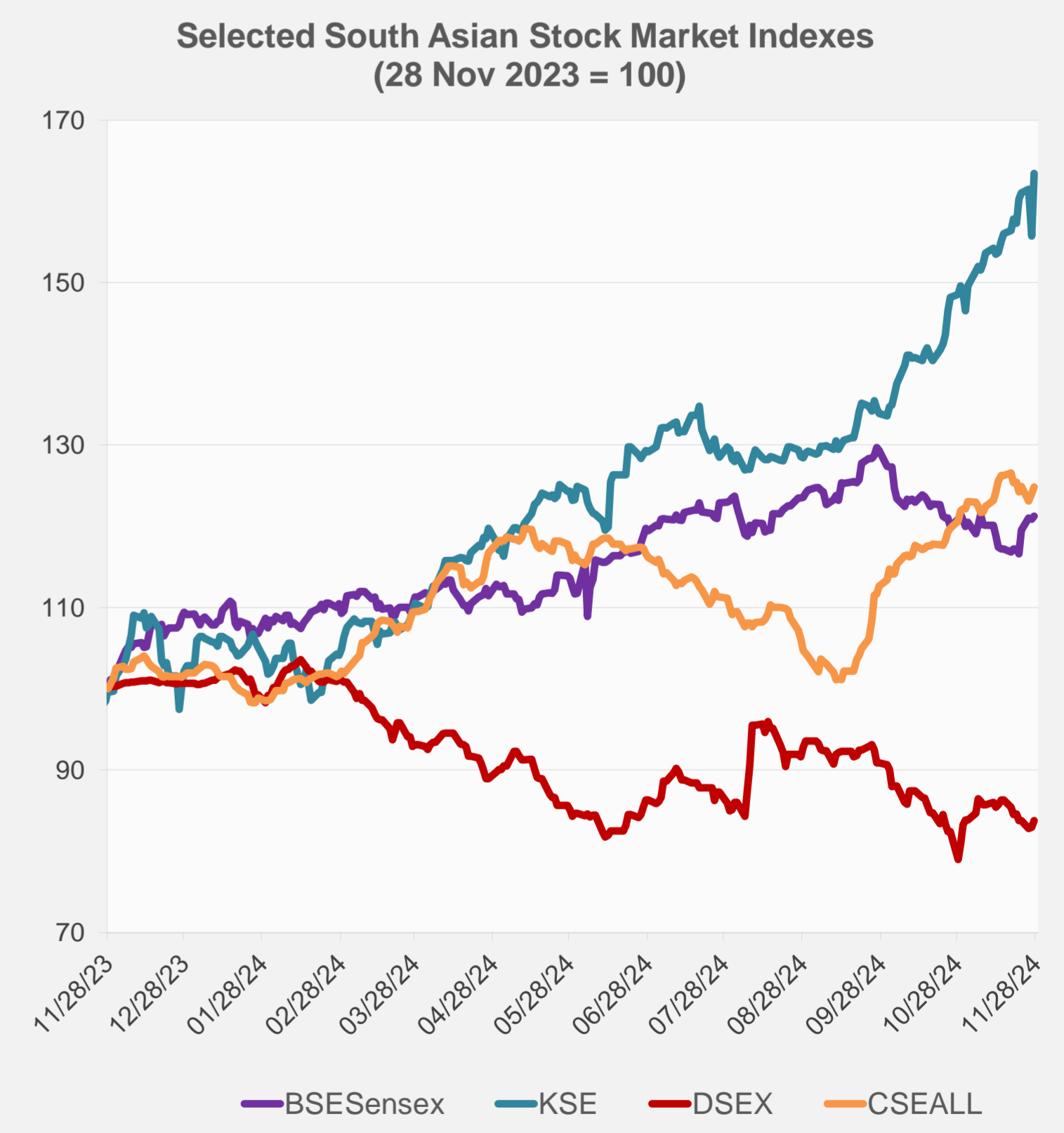
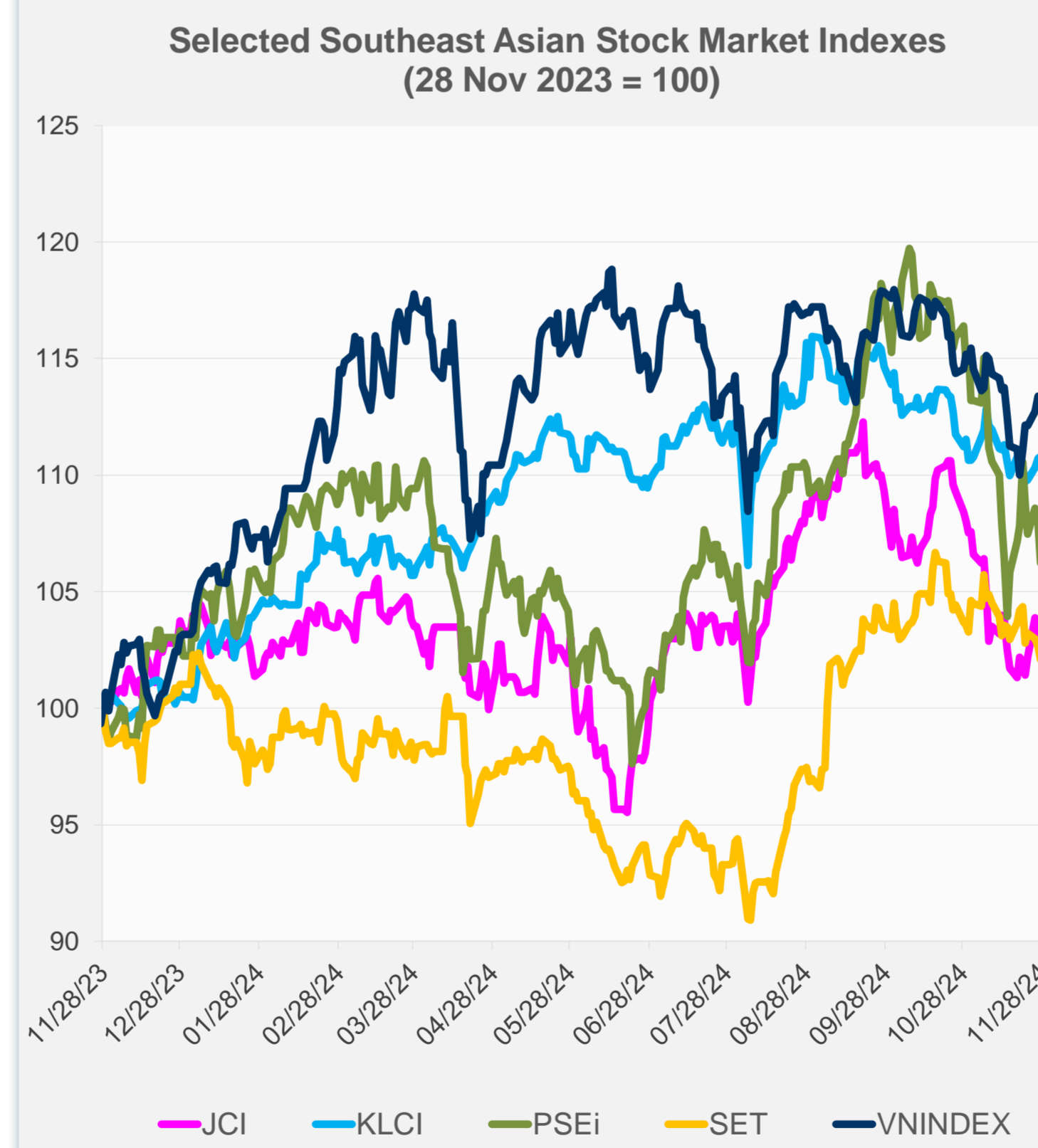
Source: Haver Analytics.

Daily Market Watch
STOCK INDEXES

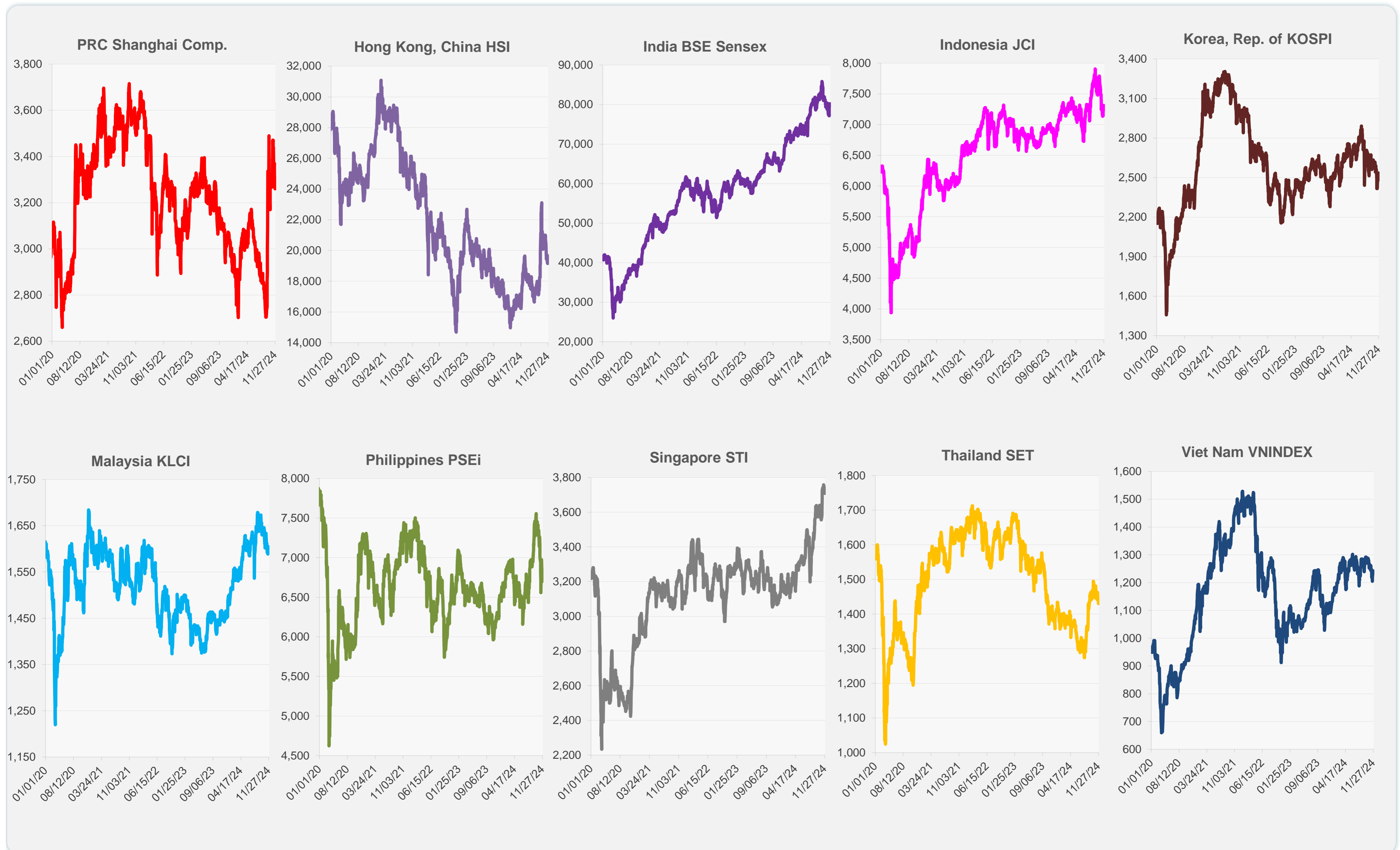
	Latest Closing	% change from Previous Day	% change from 01-Jan-24
US Dow Jones Ind Avg	44,722.06	-0.31	18.66
US NASDAQ	19,060.48	-0.60	26.97
US S&P 500	5,998.74	-0.38	25.76
UK FTSE 100	8,274.75	0.20	7.00
EURO STOXX 50	4,733.15	-0.61	4.68
Japan NIKKEI 225	38,134.97	-0.80	13.96
Bangladesh DSEX	5,197.94	1.07	-16.74
PRC Shanghai Comp.	3,309.78	1.53	11.26
Hong Kong, China HSI	19,603.13	2.32	14.99
India BSE Sensex	80,234.08	0.29	11.02
Indonesia JCI	7,245.89	0.00	-0.37
Korea, Rep. of KOSPI	2,503.06	-0.69	-5.73
Malaysia KLCI	1,604.25	0.07	10.28
Pakistan KSE 100	99,269.25	4.96	58.96
Philippines PSEi	6,702.59	-1.53	3.92
Singapore STI	3,708.09	-0.12	14.44
Sri Lanka CSEALL	13,049.83	0.66	22.49
Taipei, China TWSE	22,334.78	-1.52	24.56
Thailand SET	1,430.40	-0.55	1.03
Viet Nam VNINDEX	1,241.97	-0.01	9.92



NIE = Newly Industrialized Economies



Sources: ADB calculations using data from CEIC Data Company and Haver Analytics.



Sources: CEIC Data Company and Haver Analytics.

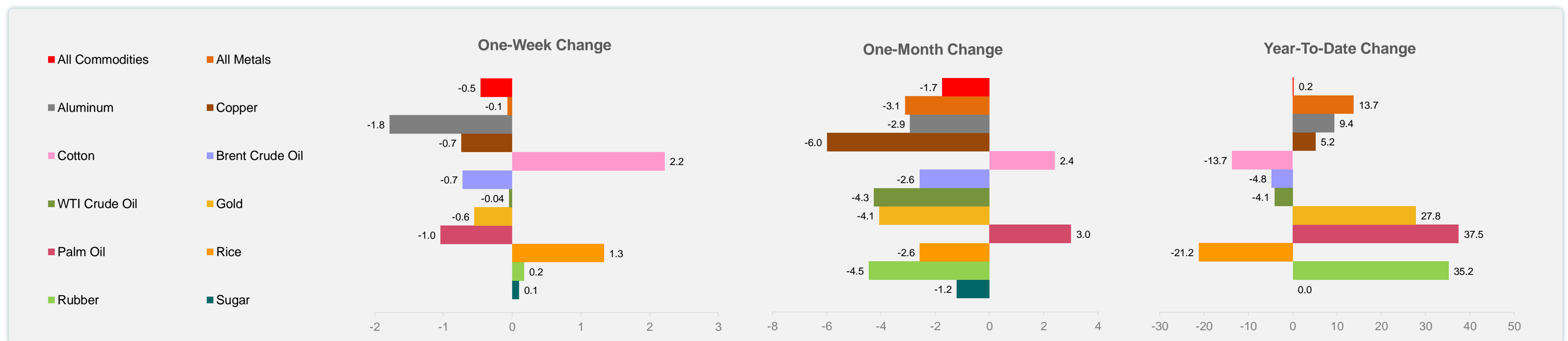
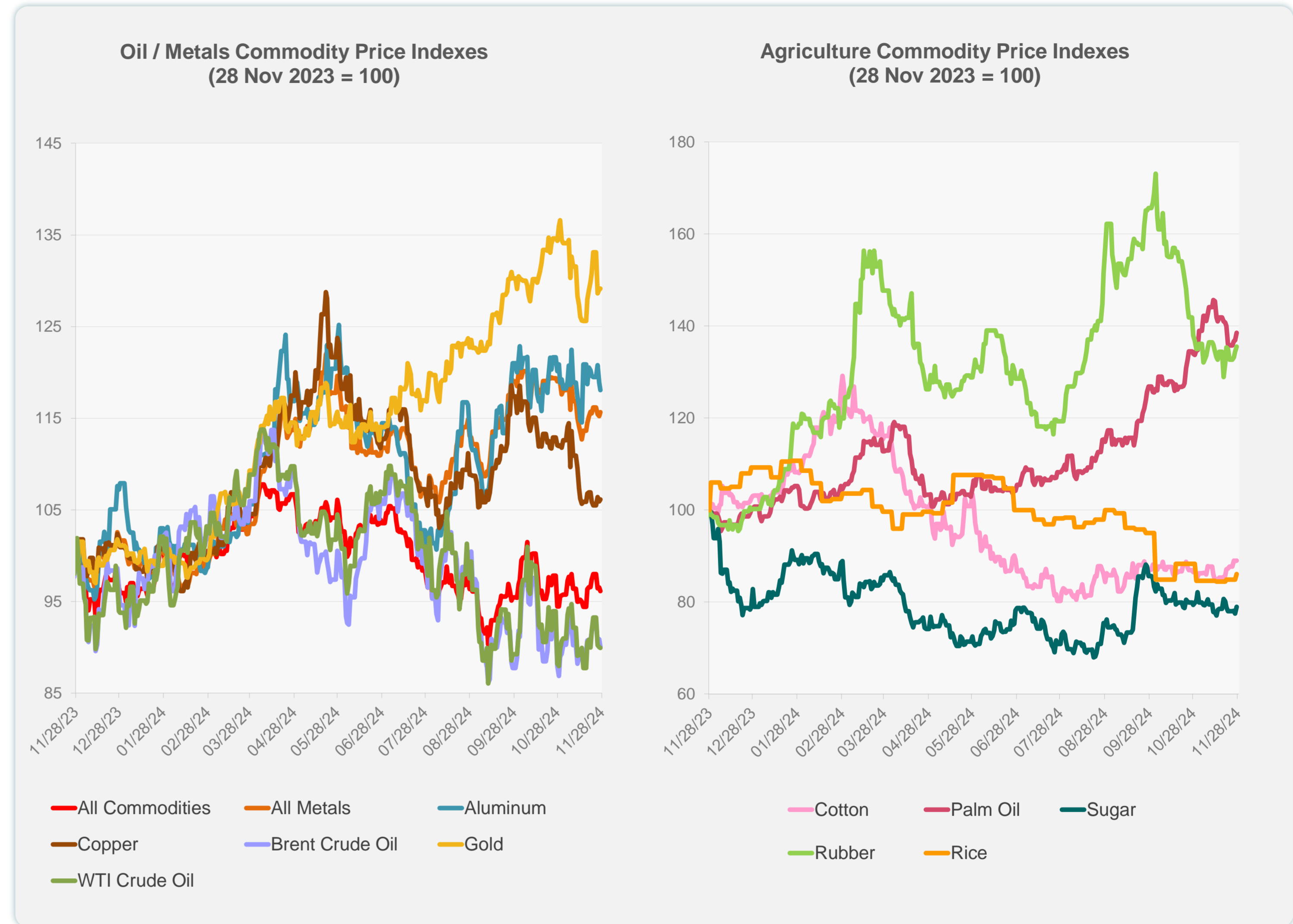
Daily Market Watch
COMMODITY PRICES

28 November 2024, 9:00 AM Manila

	Unit	Latest Closing	% change from Previous Day	% change from 01-Jan-24
S&P All Commodities	US\$	536.79	-0.41	0.21
S&P All Metals	US\$	315.54	0.37	13.74
Aluminum	US\$/metric ton	2,566.01	-0.68	9.40
Copper	US\$/metric ton	8,901.72	0.20	5.17
Cotton	US cents/lb	67.75	0.10	-13.69
Brent Crude Oil	US\$/barrel	73.90	-0.89	-4.77
WTI Crude Oil	US\$/barrel	68.72	-0.07	-4.09
Gold	US\$/troy oz	2,636.02	0.11	27.78
Palm Oil	US\$/metric tonne	1,112.11	1.17	37.47
Rice ¹	US\$/metric ton	531.00	1.34	-21.22
Rubber ²	US\$/kg	234.00	0.86	35.18
Sugar	US cents/lb	20.47	1.89	0.00

¹ Latest closing price from 27 November 2024.

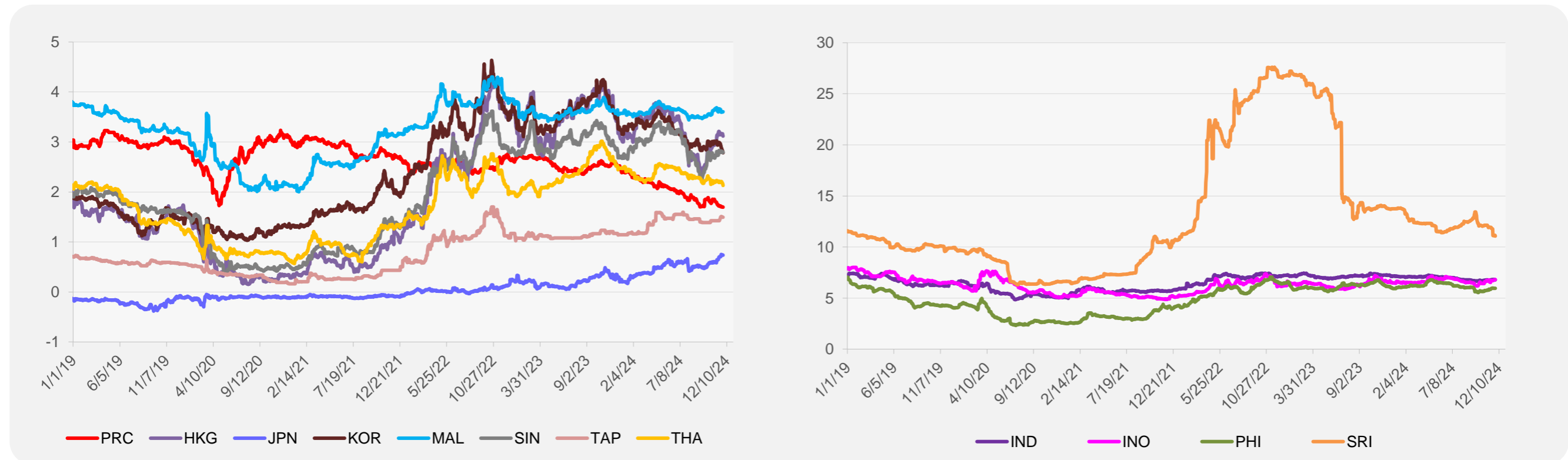
² Singapore Exchange, Ribbed Smoked Sheet Rubber.



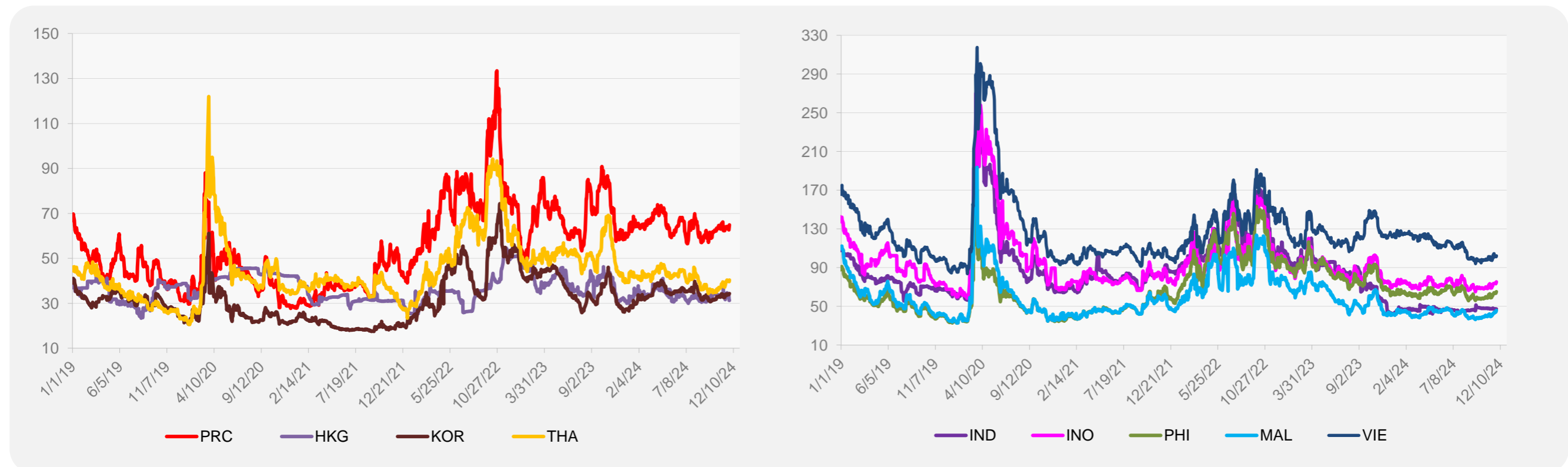
Source: ADB calculations using data from Bloomberg.

ASIA REGIONAL INTEGRATION CENTER
Regional Cooperation and Integration Division (ERIC)
Economic Research and Development Impact Department (ERDI)

5-YEAR LOCAL CURRENCY GOVERNMENT BOND YIELDS (%)



5-YEAR CREDIT DEFAULT SWAP¹



¹ In USD and based on sovereign bonds.
Source: ADB calculations using data from Bloomberg.